

**NANCY DAVIS FOUNDATION FOR MULTIPLE SCLEROSIS**



**MS Awareness Campaign  
Media Book**



**ORANGE YOU HAPPY TO ERASE MS**  
**“MONTH OF MAY MS AWARENESS CAMPAIGN”**

**MAY 2009**

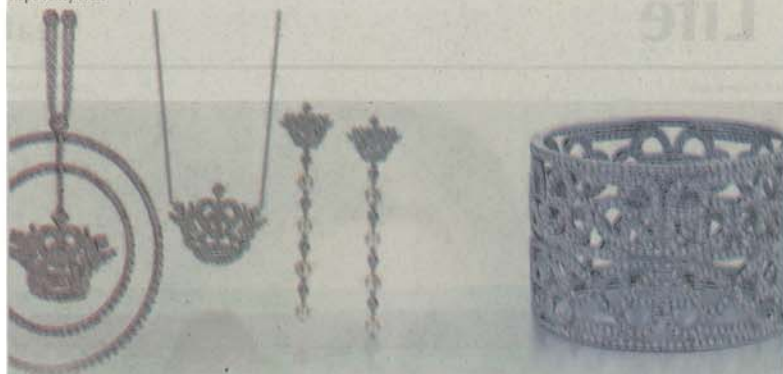
*(Los Angeles, CA – January 8, 2009)* – MS Survivor and advocate Nancy Davis will kick off May's Multiple Sclerosis Awareness Month with the 16th Annual Race to Erase MS event at the Hyatt Regency Century Plaza Hotel in Los Angeles on May 8, 2009. Each year since its inception the celebrity filled gala has raised millions of dollars for the Nancy Davis Foundation for Multiple Sclerosis and its Center without Walls program, a selected network of the nation's top seven research centers that operates with one mutual goal: to always communicate and never duplicate medical research. The star-studded evening will feature exciting live performances by legendary recording artists the **EAGLES** and **MICHELLE BRANCH** and amazing Live and Silent Auction including the first in the United States of the **2009 Lamborghini LP 560-4 Spyder**. **SCARLETT JOHANSSON** will also be one of the evening's presenters and **TOM ARNOLD** will an emcee during the live auction.

The month of May not only marks the 16th Anniversary of the Erase MS event, but also acts as the MS awareness month. Orange is the vibrant color chosen to represent Multiple Sclerosis and hope. The Foundation also has its own commemorative T Shirt to celebrate MS Awareness designed by Butterfly Dropout. A variety of products will be sold with all or a portion of proceeds to benefit the cause. Tori Burch Orange Polo Shirt, Tommy Hilfiger Orange Wallet/Very Necessary Medical Id Holder, Orange You Lucky Peace and Love Wrap Bracelet, Lisa Hoffman Beauty, Nail Polish by Cosmetic Industries, Inc., The Sports Club, Dermastore.com, EBOOST, and Francis Featherhead are among the fabulous items available for purchase. Proceeds will go to the Nancy Davis Foundation for Multiple Sclerosis. To purchase any of these items, please visit [www.erasems.org](http://www.erasems.org).

The Nancy Davis Foundation for Multiple Sclerosis is dedicated to the treatment and ultimate cure for MS. Funding research is the core focus of the Foundation and significant strides have been made to find the cause and cure of this debilitating disease. All funds raised support “The Nancy Davis Center Without Walls” program, a unique collaboration of the world's leading MS research scientists currently representing UC San Francisco, Brigham & Women's Harvard Hospital, Yale, The Cleveland Clinic, Oregon Health Science University, Johns Hopkins and University of Southern California. This nationwide collaboration of physicians, scientists and clinicians are on the cutting-edge of innovative research and therapeutic approaches to treat MS. It is the hope of the Foundation that in addition to combating MS through research in a clinical environment, awareness will be created by educating the public about this mysterious disease. .

For additional information or to request media credentials to cover this event, please call the Nancy Davis Foundation Office at 310-440-4842, or email [info@erasems.org](mailto:info@erasems.org) .

Antelope Valley Press



## Shopping for a cure

By LIANE M. ROTH Valley Life Editor

Nancy Davis has always had a love for hearts, jewelry and anything symbolic of bringing good luck and sentimental messages. In 2002, for her annual charity event, she and Tommy Hilfiger came up with the theme, "Peace and Love to Erase MS." The event's symbol became a heart with a peace sign nestled in the middle.

As a thank you gift of the evening, Davis made necklaces with this symbolic icon for such celebrities as Donna Summer, Sela Ward and Jennifer Stallone. Upon seeing the pieces, the performers wanted to buy them for all of their relatives and friends. Davis then started developing this idea into many different pieces resulting in what is now over a 150 piece collection called Peace and Love jewelry by Nancy Davis.

Davis said the Peace & Love collection is the result of her personal journey and struggles with multiple sclerosis.

Davis's dedication to funding research for a cure resulted in the creation of the Center Without Walls, a network of six MS institutions dedicated to research programs and therapeutic

approaches to eradicate the debilitating disease.

The Peace & Love collection is available at Saks Fifth Avenue, Beverly Hills; Neiman Marcus, Beverly Hills; Geary's, Beverly Hills; Fred Segal, Tessorini at the Bellagio, Las Vegas; and the MGM Grand, Las Vegas; or by calling (866) 732-2318.

The Tommy Hilfiger leather wallet retails for \$50 and the Peace and Love silver pave bracelet by Davis retails for \$255.

The Alexander Knight leather bracelet retails for \$95.

All three pieces and many others suitable for Mother's Day gift giving are available at [www.erasms.org](http://www.erasms.org).

A portion of the sale of these and other items support the Nancy Davis Foundation for Multiple Sclerosis.



## MS symposium slated

By LIANE M. ROTH Valley Life Editor

The Nancy Davis Foundation for Multiple Sclerosis will present an open forum discussion at 10:30 a.m. on Saturday, May 9, at the Los Angeles Hyatt Regency Century Plaza, 2025 Avenue of the Stars.

Leading scientists and doctors involved in the Center Without Walls program will discuss the latest breakthroughs in MS research and treatments.

Doctors from Brigham & Women's Hospital, Harvard, John Hopkins Hospital, the Mellen Center of Cleveland, Ohio, Oregon Health Sciences University, University of California, San Francisco, University of Southern California and Yale University School of Medicine are scheduled to attend.

MS sufferers and their families are invited to attend the free event and speak with the doctors about the advances that have been made in MS research and patient care, said Nancy Davis, founder of the foundation.

Multiple sclerosis is a chronic, often debilitating disease that attacks the central nervous system, which is comprised of the brain, spinal cord and optic nerves. Symptoms range from mild, such as numbness in the limbs, to severe, including paralysis or loss of vision. The severity, progress and specific symptoms of MS are unpredictable and vary from person to person.

Most people are diagnosed between 20 and 50 and women are more than twice as likely to be diagnosed with MS than are men. More than 400,000 people in the United States alone have been diagnosed with this disease, and more than 2.5 million people worldwide are afflicted with the condition.

At least 600 people in the Antelope Valley have been diagnosed with MS.

For details, call (310) 440-4842 or visit [www.erasms.org](http://www.erasms.org).

[lrath@avpress.com](mailto:lrath@avpress.com)





JUNE 1, 2009  
ISSUE #22

## STAR SUPPORT

# Race to Erase Multiple Sclerosis

Juice up your summer wardrobe with these **Orange You Happy to Erase MS** items and help support efforts to find better treatment and, ultimately, a cure



### CORAL CUFF

Alexandra Knight's genuine alligator bracelet brightens any wardrobe. \$95; [shop.erasems.org](http://shop.erasems.org)

### FLIRTY FROCK

This Alice+Olivia Madison party dress "is one of my favorites," says Lisa Rinna. "I can look good and feel sexy, plus 10 percent of the proceeds support a great cause." \$440; Alice+Olivia, 310-247-0120



Singers  
Aly & AJ

Exclusively designed by Tommy Hilfiger, all sales of this tee support the Nancy Davis Foundation for MS. \$25; [shop.erasems.org](http://shop.erasems.org)

**'I LOVE MY T-SHIRT! IT'S MAKING A DIFFERENCE FOR THOSE AFFLICTED WITH MS. WHAT'S BETTER THAN THAT?'**

— AVRIL LAVIGNE



### SUMMER SCENTS

100 percent of profits from the Tunisian Neroli scent will go to the foundation for the month of May. Must be purchased from Lisa Hoffman Beauty Web site. \$150; [lisahoffmanbeauty.com](http://lisahoffmanbeauty.com)



### PUT A RING ON IT

G. Neil Lane for Arcade. 100 percent goes to charity. \$975; Arcade, 323-944-0018



Avril  
Lavigne

## HOW YOU CAN HELP!

May is national MS month; show your support by buying the items shown above or making a direct donation. Affecting over 400,000 Americans, MS causes the body to attack

healthy tissue, which results in the loss of muscle control. Erase MS has raised more than \$30 million to fight the disorder, which targets three times as many women as men, typically between the ages

of 20 and 30. Davis' Center Without Walls, a cutting-edge research and treatment program, continues to work tirelessly in pursuit of a cure.

**For more information, visit the Web site [erasems.org](http://erasems.org).**





JUNE 1, 2009

## ERASE MS GIFT BAG

White House Black Market's Nancy Davis Foundation for Multiple Sclerosis bag includes this Alice + Olivia dress and items from Tommy Hilfiger, Lisa Hoffman beauty, Tory Burch and more. [Erasems.org](http://Erasems.org).



For these and other fab prizes, go to [intouchwinit.com](http://intouchwinit.com)! **NO PURCHASE NECESSARY.**

Open to current legal residents — ages 13 and older — of the United States and the District of Columbia. Void elsewhere and where prohibited or restricted. For full rules and free entry, go to [intouchwinit.com](http://intouchwinit.com).

# Angeleno

MODERN LUXURY™

MAY 2009

One of the "Orange You Happy" products.



## Race to Erase MS

*In honor of Multiple Sclerosis Awareness Month, the Nancy Davis Foundation for MS is hosting its **16th annual Race to Erase MS Gala**, a full-fledged fundraising affair with live performances by The Eagles and Michelle Branch and auctions with more than 500 items. On the block? The first U.S. model of the 2009 Lamborghini LP 560-4 Spyder, specially detailed in black and orange, and a weeklong stay at Tommy Hilfiger's estate in Mustique—right next door to Mick Jagger. Or pick up a brightly colored piece from the "Orange You Happy to Erase MS" line, proceeds of which benefit Davis' foundation and its Center Without Walls research program. Says MS survivor Davis: "We decided we needed to brand MS with a healthy color [like orange], and I thought of vitamin C...it's just a happy, healthy color." **May 8, Fri., 6:30PM. Tickets \$1,000. At the Hyatt Regency Century Plaza Hotel, 2025 Ave. of the Stars, Century City. [erasems.org](http://erasems.org). —Chau Tu***





## BETTER WAY ...

... to spend  
your **tax refund**

■ Before you blow your cash on a box set of 30 *Rock*, indulge in some guilt-free shopping: **In May, an army of designers, including Tommy Hilfiger, will sell orange-themed goodies—bracelets, tees, wallets—to raise money for the Nancy Davis Foundation for Multiple Sclerosis.** It's part of a new campaign, **Orange You Happy to Erase MS** (aw!). Your dollars will help fund research for the disease, which affects twice as many women as men and can cause complete paralysis. "This disease is affecting too many women in their prime," says Nancy Davis, who has battled MS for 17 years. Just go to **EraseMS.org** and start shopping.

—Jihan Thompson





# Daily News

DailyNews.com

## FIGHTING FOR A CURE

Nancy Davis devotes her life to battling MS — for herself and others.  
**L.A. LIFE**



### M/LALIFE MORE HEALTH AND FITNESS TIPS

NANCY DAVIS  
DEVOTES HER  
LIFE TO BATTLING  
MS — FOR  
HERSELF  
AND OTHERS

# 'I want a cure, fast'



By Sandra Barrera Staff Writer

When Nancy Davis first was diagnosed with multiple sclerosis almost 18 years ago, she was told by the neurologist to go home and go to bed.

"For how long?" Forever, he told her.

But the then 33-year-old daughter of billionaire Marvin Davis wasn't about to accept the prognosis without a fight. She created the Nancy Davis Foundation for Multiple Sclerosis and its Center Without Walls, a network of the nation's top seven research centers whose singular goal is to advance and never repeat studies in the search for a cure.

These experts will be in Los Angeles at 10:30 a.m. May 9 at the Hyatt Regency Century Plaza alongside Davis and actress Teri Garr to discuss the latest findings in the cure for MS, answer questions and meet privately with people during a free event that's open to the public. It follows the 16th Annual RACE to Erase MS, a ticketed fundraising event that kicks off National MS Month May 8.

The gala that features performances by the Eagles and Michelle Branch as well as an appearance by Scarlett Johansson is called a "RACE" for a reason.

"I want a cure fast," Davis says.

MS is a chronic neurological disease that affects three times more women than men. It lays dormant in the body until something stressful kicks off an attack. But symptoms manifest differently depending on the areas of the central nervous system that have been scarred by the overactive immune cells, which damage the fatty protective layer around nerve fibers.

The scarring disrupts nerve impulses from the brain and spinal cord to the rest of the body leading to any number of symptoms, from overwhelming fatigue to an inability to walk.

Looking at Davis you'd never know she has the disease.

At 52, she's got enough energy to head up her foundation and keep up with her 4-year-old twins, Isabella and Mariella, with second hus-

DAVIS 15

## THE 16TH ANNUAL RACE TO ERASE MS

**What:** The Eagles, Michelle Branch, Scarlett Johansson and others join Nancy Davis for her fundraising gala that benefits the Nancy Davis Foundation for Multiple Sclerosis and its Center Without Walls. Auction items include a 2009 Lamborghini LP 560-4 Spyder, a one-week stay at Tommy Hilfiger's estate next door to Mick Jagger's place in Mustique, a four-day vacation at the Four Seasons Resort Punta Mita and more.

**Where:** Hyatt Regency Century Plaza Hotel, 2025 Avenue of the Stars, Los Angeles.

**When:** 6:30 p.m. May 8.

**Cost:** Tickets and tables respectively start at \$1,000 and \$10,000.

**Information:** 310-440-4842 or info@erasems.org.



David Cross Staff Photographer

Nancy Davis, who was diagnosed with multiple sclerosis 18 years ago, holds her annual event on treatment and fundraising for the disease on May 8. Above, Davis at home with her twin daughters Isabella and Mariella.



David Crane Staff Photographer

Despite her MS, 52-year-old Nancy Davis says she has enough energy to keep up with her daughter Mariella, and Mariella's twin, Isabella. Davis also runs her foundation for multiple sclerosis and its Center Without Walls.

## DAVIS

FROM PAGE 1

band Ken Rickel. She also has three adult children from a previous marriage. As the blond, blue-eyed girls bounce in and out of the traditional-style living room of the Bel Air mansion where Davis has raised all her children, she embraces them with hugs, kisses and whispers.

Although she experiences flare-ups from time to time, Davis has managed to control the symptoms of her disease and continue with a normal life despite the early prognosis.

Some 18 years ago, Davis was diagnosed with the chronic neurological disease three weeks after tearing her knee ligament on the slopes of Aspen. She woke up one morning without any feeling in the tips of her three middle fingers on her right hand, but she thought nothing of it.

Three days later the fingers of her left hand fell numb, and then she lost the feeling in both hands.

When she walked into the neurologist's office, she had no sensation in her stomach, and her vision began to blur.

An MRI that followed revealed large spots on her brain and spine.

She remembers the neurologist saying, "You're really lucky you don't have a brain tumor, but you do have a disease called multiple sclerosis."

"From what I knew of multiple sclerosis, it didn't sound like I was very lucky," she says. "I pictured a person in a wheelchair for the rest of their life incapable of doing anything. I thought, my life is never going to be the same, and it wasn't."

Davis did what the majority of people refuse to do. She challenged the doctor — the inspiration behind her book, "Lean on Me: 10 Powerful Steps to Moving Beyond Your Diagnosis and Taking Back Your Life" — by seeking a number of second opinions, from UCLA to the National Institutes of Health to Harvard.

Each one confirmed the initial diagnosis but offered a different prognosis, including "you can live an OK life" and "exercise can help."

But there were no magic pills to take. In fact, research into cures for MS were grossly underfunded at the time.

The researchers had unknowingly been duplicating the same studies for 40 years due to lack of communication. And that's when Davis decided to get involved.

"My sister's a juvenile diabetic; so my family had a reputation of working on children's diabetes," she says. "I thought, if I could get the best and the brightest to work as a team we might find a cure for MS."

After two attempts at putting something together, the Center Without Walls

was born.

Money is channeled in all different areas of MS, from stem cell to genetics to addressing the problem of depression.

"The leading cause of death for people with MS is suicide, which I didn't know, and that was a really important thing that we were not addressing with all the other research we were doing," Davis says.

"So, some of the medications that are now available help certain people."

One of the newer classes of drug is Rituxin, which is FDA approved to treat cancer and rheumatoid arthritis.

It has been found to reduce inflammatory brain lesions inherent in MS, although it hasn't yet been approved for treating the disease. Still, doctors have been giving it to patients.

One of the benefits of the drug is it requires no daily injections.

Patients are given one intravenous four-hour infusion followed by another two weeks later and not again for a year. The only option given to Davis at the time of her diagnosis was to take steroids for various symptoms.

"Having diabetes running in my family, there was a high propensity also to become diabetic from taking steroids," she says. "I didn't want to take steroids anyway."

She chose instead to go the homeopathic and life-changing route against her doctor's wishes.

"My traditional doctors to this day don't agree with it," Davis says, adding she's never been on any of the MS medications. "But, ultimately, you have to do what's right for you."

Sandra Barrera 818-713-3728  
sandra.barrera@dailypress.com



## Help Hollywood Erase MS



Copyright 2009 Fredrick M. Brown / Getty Images



**Nancy Davis** is getting Hollywood heavies to join her in the "Race to Erase MS" -- and they need all the help they can get. Find out how to get involved with gifts starting at just \$8!

Right now, products like signature nail polish (\$8) Eco tote bags (\$12) and **Tommy Hilfiger** T-Shirts (\$25) are selling on the EraseMS web site ([www.erasems.org](http://www.erasems.org)) -- where proceeds benefit the campaign, which funds a network of the nation's top MS research centers called the Center Without Walls program.

Additionally, the upcoming month of May is MS Awareness Month. Similar to breast cancer awareness going pink, supporters are encouraged to wear orange to show their unity.

Anybody can get involved by purchasing shopping the web site, as well as making donations or purchasing tickets for the 16th Annual Race to Erase MS gala on May 8. The event will feature performances by the **Eagles** and **Michelle Branch**, with special appearances by **Scarlett Johansson**, **Tom Arnold**, **Teri Garr**, **Rob Lowe** and **Blair Underwood**.

Posted April 14, 2009 5:43:00 AM

See All: [blair underwood](#) [celebs](#) [eagles](#) [michelle branch](#) [Nancy Davis](#) [Rob Lowe](#) [scarlett johansson](#) [teri garr](#)



ninefourfour

**WWW.944.COM**

**[www.944.com/articles/philanthropic-festivities/](http://www.944.com/articles/philanthropic-festivities/)**

**Posted April 27, 2009**



## Philanthropic Festivities

Singer Avril Lavigne embraces her punk, skater girl image while supporting one of her favorite causes: Multiple Sclerosis. And she's not the only one becoming part of the cause. On May 8, the annual Race to Erase MS charity event will occur, with Avril and other celebrity guests such as Scarlett Johansson and The Eagles slated to attend. The live auction at the May 8 event will feature an orange Gallardo LP 560-4

Spyder Lamborghini-the first of its kind to be available in the U.S, in addition to other amazing gifts such as a seven day stay for fifteen guests at Tommy Hilfiger's luxurious house in the Caribbean island of Mustique. Sure to be a star-studded event, this soiree is certainly one you can feel good about going to, even with that post-party hangover.

posted April 27, 2009

## CELEBS COME TOGETHER TO FIGHT MS

LOS ANGELES - Celebrities will come out in full force on May 8th to support Nancy Davis's 16th Annual Race to Erase MS at the Hyatt Regency Plaza in Los Angeles with live performances by the Eagles and Michelle Branch.

The Nancy Davis Foundation for Multiple Sclerosis is dedicated to the treatment and ultimate cure of MS.

This year, in conjunction with the 16th annual Race to Erase MS event on May 8, we are launching the "Orange You Happy to Erase MS" campaign to make the month of May the official awareness month of multiple sclerosis.

Orange is the vibrant color of hope which is why it was chosen to represent the campaign to cure Multiple Sclerosis. Brands who are participating include White House/Black Market, Lisa Hoffman Beauty, Tommy Hilfiger, Alice & Olivia, and Tory Burch.

On May 8, Lamborghini will also be auctioning off its newest model, the first of its kind to be produced in the North American Market.

Celebrities attending the event this year include: Scarlett Johansson, Dustin Hoffman, Amy Smart, Brittany Snow, Giuliana and Bill Rancic, Reggie Bush and Kim Kardashian, Karina Smirnoff and Maxim Chmerkovskiy, DJ AM, Mario Lopez, Rob Lowe, Blair Underwood, Drew Lachey, Jon Lovitz, Paris and Nicky Hilton, Nicole Richie and Joel Madden.

Copyright Katrina King - FOX TV



Singer Avril Lavigne

Monday

May 4, 2009

40 pages, 5 sections

50¢

94th year, No. 34

# Antelope Valley Press



Nancy Davis, founder of the Nancy Foundation for Multiple Sclerosis, models pieces of jewelry from her own line, Peace and Love. Contributed

## Determined to find a cure for MS

By LIANE M. ROTH Valley Life Editor

**A**t age 33, Nancy Davis was living the good life in sunny Southern California.

Born and raised in Denver, Colorado, Davis moved West in 1987 and soon became enmeshed in many activities.

The pretty blonde wife and mother was active in her community. She enjoyed playing tennis, traveling and skiing the snowy mountain slopes of Colorado's finest resorts — when she wasn't volunteering for one cause or another.

Then, in 1991, Davis' world came crashing down.

"I had a ski accident. Within three weeks I had no feeling in the fingertips in my right hand," Davis said.

"I thought, okay, it's just from the accident, no big deal. But every few days I was losing feeling in another part of my body."

Davis tried physical therapy, electric stimulus and other medically recommended treatments but nothing helped.

"I decided to go to a neurologist — typical, the doctors were blaming my symptoms on something else."

The neurologist ordered an MRI among other tests and Davis finally had an answer for her perplexing condition — multiple sclerosis.

"The doctor gave me a negative prognosis for the rest of my life. He said I would never walk again — that I'd be lucky to operate a remote control," Davis said.

"The idea of sitting in bed watching soap operas was nauseating. I was a young woman with three kids, not in a good marriage, diagnosed with MS. It was terrifying."

Davis decided to get another opinion. Even though the next doctor confirmed she did, in fact, have MS, he could give her little medical advice, either.

"When I was diagnosed back in 1991, MS was a mystery disease. There were no drugs — nothing you could do. I was devastated. I talked to different doctors and

everyone said different things. There was no good news."

On top of the devastating diagnosis, Davis' marriage was falling apart. "I did not have a supportive husband. I did a lot of soul searching. Then I decided to do my own research on my disease."

Davis found plenty of researchers and doctors working on a cure for the debilitating disease but no one was sharing their findings, she said.

"There were a zillion hospitals and a zillion labs all doing the same testing. What we needed was to get all the doctors on the same team. They were duplicating tests, getting different results, finding out things about the disease but not getting the information to the people who needed it most — the patients."

"It was frustrating getting different diagnoses. I needed the best of the best truly together to find a cure, to help more people."

In 1993 she founded The Nancy Davis Foundation for Multiple Sclerosis, a nonprofit organization whose focus is to raise funds for aggressive, cutting-edge research to find a cure for MS.

Once she was ready to move forward, Davis divorced her husband. She continued to raise money for MS research despite her struggles with her condition.

Davis decided to organize an informational symposium in Aspen to bring together people who were involved in finding a cure for MS.

She invited top doctors, researchers and scientists to the event, where they designed

a system of integrating information including studies, findings and promising results from a variety of treatments in a database accessible from anywhere around the world.

Thus was born the Center Without Walls program, consisting of dozens of individuals leading the race to cure MS or at the very least, relieve many of the symptoms.

Through her foundation's numerous fundraisers and jewelry sales, Davis is able to sponsor free informational symposiums for patients and their families, where the doctors involved in research can answer questions and discuss the latest treatment options.

"We give out all our money. We spend it all on these doctors who are doing everything they can to find a cure. We have a scientific advisory board to oversee everything. We have the best of the best in the field," Davis said.

Today, the energetic Davis is remarried and she and her husband have twin girls.

Davis is an active individual with few traces of her condition. She skis, plays tennis, has a black belt in karate and continues to travel, determined not to let MS slow her down or keep her from reaching out to others.

In 2006, Davis released her first book, "Lean on Me: 10 Powerful Steps to Moving Beyond Your Diagnosis and Taking Back Your Life," Fireside/Simon & Schuster, Inc.

She has her own line of jewelry on QVC, where a portion of the purchase price supports research.

"Now there's so much information on MS, so many more options for sufferers. I'm bound and determined we'll find a cure," Davis said. "Life is what you make of it. Negativity makes negativity so why not be positive? There's always hope but you have to look for it. Most importantly, life is a precious gift to you. Don't let anyone take that away."

lroth@apnews.com

Orange  
you Happy to  
Erase MS





**NANCY DAVIS AND TOMMY HILFIGER PRESENT**



TOMMY  HILFIGER

The 16<sup>TH</sup> Annual Race To Erase MS  
2009 MEDIA BOOK

# BIZBASH

## Los Angeles

\$4.95 JANUARY/FEBRUARY 2009 BIZBASH.COM

### Southern California's Top 100 Events

## SOUTHERN CALIFORNIA'S TOP 100 EVENTS

### Benefits

**1. Carousel of Hope** Barbara Davis's fund-raiser is known for attracting celebrities and raising big bucks—more than \$80 million since its inception in 1982. Last year's ball at the Beverly Hilton honored Pauletta and Denzel Washington, and included performances by the Jonas Brothers and Josh Groban.

**2. Race to Erase MS** Nancy Davis partners with Tommy Hilfiger to host this event, which last year raised \$2 million for Multiple Sclerosis research with the help of auction items like a shopping trip with the Hilton sisters. The 16th annual benefit is scheduled for May 8 at the Hyatt Regency Century Plaza.

**3. Los Angeles Opera Opening Weekend Celebration** Each year, the Los Angeles Opera launches its season with three days of events. Last year's festivities included a dinner at a private home for donors, as well as a presentation of the season's new productions at the Music Center.



**4. Los Angeles Philharmonic Gala** The premier local orchestra opened its 2008-2009 season by setting off fireworks inside the Walt Disney Concert Hall during a September concert led by departing music director Esa-Pekka Salonen. Swiss watchmaker Breguet sponsored the gala, and Special Occasions handled event design and production.

**5. Saks Fifth Avenue's Unforgettable Evening** This event benefits the Entertainment Industry Foundation's Women's Cancer Research Fund. The February 2008 evening at the Beverly Wilshire honored Hilary Swank, featured a performance by Mary J. Blige, and raised more than \$1.5 million.

**6. UCLA Jonsson Comprehensive Cancer Center's Taste for a Cure** This food-centric fund-raiser for cancer research took to the Beverly Wilshire last

**↑ UP FROM 7** June. *Bon Appétit* editor in chief and event co-chair Barbara Fairchild helped select influential vintners and chefs to prepare wine and food for close to 500 guests.

**7. Chrysalis Butterfly Ball** This June 2008 event at a private Brentwood home trumped its previous records, attracting more than 800 guests and raising \$1.1 million to help homeless individuals find employment. Sponsors included Saks Fifth Avenue, and Smashbox and Jurlique donated gift bags.

**8. HollyRod Foundation's DesignCare Benefit** DesignCare founders Holly Robinson Peete and Rodney Peete helped raise more than \$500,000 to support families facing debilitating diseases. The July event included a performance by Maxwell and an Emanuel Ungaro fashion show.

**9. Natural History Museum of Los Angeles County's Dinosaur Ball** The museum's black-tie biannual fund-raiser returns this year with an "Exploring the Mysteries of Life on Earth" theme, crafted by event producer Timeless Celebrations. The ball is scheduled to take place on April 25.

**10. Scriptor Award Gala** The USC Libraries Scriptor Award honors writers for adapting books into film and will take place in the university's Edward L. Doheny Jr. Memorial Library on January 20. Proceeds benefit the Doheny Library Preservation Fund.

**11. Starlight Foundation Gala** Last year's gala at the Beverly Hilton Hotel raised more than \$1 million for seriously ill children. *High School Musical's* Corbin Bleu hosted the March 2008 evening, which presented William and Elizabeth Shatner with the nonprofit's Heart of Gold Award. The 2009 gala will take place March 27.

**12. Concern Foundation's Block Party** For its 35th fund-raiser benefiting cancer research on July 11, the Concern Foundation will return to its long-standing home at Paramount Studios and stick with its block-party formula, which presents guests with more than 50 restaurant stations. Last year's block party raised \$1.5 million.

**13. California Science Center's Discovery Ball** More than 800 guests converged at the Science Center for last year's 10th annual black-tie fund-raiser, which helped the museum raise more than \$1.3 million toward educational programs and exhibits. This year's ball will take place February 7.

**14. Fulfillment Fund's Stars Benefit** Ryan Seacrest hosted this October 2008 benefit at the Beverly Hilton, where more than 800 guests turned out to support the fund, which helps economically disadvantaged youth graduate high school and college.

**15. Backstage at the Geffen** For its sixth annual fund-raiser in March 2008, the playhouse raised a record-breaking \$575,000. The event drew a sold-out crowd and included performances from honoree Annette Bening and event co-chair Dick Van Dyke.

**16. Pasadena Showcase House of Design** This benefit supports a variety of music programs, and draws close to 40,000 visitors to tour a Pasadena home that has been decorated by select designers. The 2009 showcase will run April 19 through May 17.

**17. Tiger Woods Foundation Block Party** Held at the Grove of Anaheim, proceeds from this annual benefit go toward the golfer's eponymous learning center. The October 2008 fund-raiser featured a three-course meal prepared by Mario Batali and a performance by musician Seal.



# The Hollywood Reporter

Tuesday, May 12, 2009

\$2.99

a Los Angeles Business Media publication **THR.com™**

## ABOUT TOWN

THR.com/abouttown

### Amazing Race

The Eagles played a cozy five-song set at Friday's **Race to Erase MS** fundraiser, after which the band's **Don Henley** unleashed his trademark caustic wit. After explaining the band's song choices, he couldn't resist admonishing the crowd with, "like the one you just talked through." The event, held at the Hyatt Regency Century Plaza, raised \$2 million. **Teri Garr**, who is afflicted with MS, received a standing ovation when she went on stage with the assistance of two young men, and an auction of a 2009 Lamborghini Gallardo LP 560-4 Spyder topped off at \$270,000.

Over in Beverly Hills the following evening, the **Noche de Niños Gala** at the Beverly Hilton, benefiting Childrens Hospital Los Angeles, brought out **Annette Bening**, **Warren Beatty**, **Jennifer Lopez** and **Gov. Arnold Schwarzenegger**, who presented **Jamie Lee Curtis** with the Entertainment Industry Courage to Care Award.

— Borys Kit



1. Dustin Hoffman at Race to Erase MS 2. Musicians Don Henley and Michelle Branch 3. Jewel at Race to Erase MS 4. Gov. Arnold Schwarzenegger and Jamie Lee Curtis 5. Annette Bening and Warren Beatty 6. Mayor Antonio Villaraigosa and Race to Erase MS co-chair Nancy Davis 7. Jennifer Lopez and Marc Anthony

RYBERLINER STUDIO/BEIMAGES, JASON KEMPIN/GETTY IMAGES FOR NICHE MEDIA, FRAZER HARRISON (1, 3), KEVIN DIANEZIAN (2, 6), ALEX J. BERLINER/BERLINER STUDIO/BEIMAGES (4, 5, 7)



# LOS ANGELES CONFIDENTIAL

THE FASHION ISSUE

16TH ANNUAL RACE  
TO ERASE MS GALA  
HYATT REGENCY  
CENTURY PLAZA  
MAY 8, 2009

PHOTOS BY  
WIREIMAGE



Dina Carroll and Tommy Hoffman



Jon Lovitz and Dustin Hoffman



Gil Iran and Guiana Rios



Wolfgang Puck and a Lamborghini



Miguel Antonio Villarreal

## LIMELIGHT

OUT AND ABOUT



Jewell, co-chair Nancy Davis, Marcella Ricci and Michelle Branch at the 16th annual Race to Erase MS gala at the Hyatt Regency Century Plaza on May 8, 2009

# DAILY VARIETY

Reed Business Information (RBI)

LOS ANGELES ■ TUESDAY, MAY 12, 2009 ■ VARIETY.COM



Dustin Hoffman and Anne Heche at Friday's Race to Erase MS dinner; right: Nia Vardalos at the fund-raiser, which fetched \$2 million; top: Angie Harmon and Amanda Bynes

## ORG STRIKES A CHORD

By BILL HIGGINS

**T**hough the Eagles' performance at Friday's Race to Erase MS event was what the crowd was waiting for, attendees certainly had to wait quite awhile.

The group's rather somber five-song set was preceded by: a massive silent auction; a live auction; a speech by founder **Nancy Davis**; remarks from actress **Teri Garr** (who has MS and whose speech garnered an enthusiastic standing ovation) and **Blair Underwood**; a set by the "Dancing With the Stars" partners; a perf from **Michelle Branch**; and an award presentation by Mayor **Antonio Villaraigosa**, who had to tell the crowd — which was by then way ready for the Eagles — to shut up while he spoke.

"I wanted this to be our rock 'n' roll year," Davis said. "After 16 years, you want to keep it fresh and surprise people with something different."

Including the auction items (one of which was a Lamborghini that went for \$270,000) the event raised more than \$2 million.



Above: Bill Maher and Jon Lovitz; Nancy Davis (who co-hosted the event with Tommy Hilfiger) and Jewel; left: Don Henley performs with the Eagles during the fund-raiser at the Hyatt Regency Century Plaza.



# BEVERLY HILLS

Volume 27

## [213]

Number 8

### HAPPENING

PHOTOGRAPHS BY MAXINE PICARD

## THE 16TH ANNUAL RACE TO ERASE MS

Recently, supporters from around the world gathered at the Hyatt Regency Century Plaza to help raise money for treatment and, ultimately, a cure for Multiple Sclerosis. All funds raised at the event went to The Nancy Davis Center Without Walls program, a selected network of the nation's top seven MS research facilities. Attendees enjoyed a performance by legendary recording artists The Eagles and Michelle Branch.



Joseph Pippett, Penny Marshall, Robert Knepper



Ken Rickle, Nancy Davis, Isabella Rickle, Mariella Rickle



Barbara Davis



Zach Zalban, Jen Goldman, Joyce and Stanley Black



Elke Sommer, Wolf Walther, Sabine Lesavoy



Alice Evans, Ioan Gruffudd



Gelila Puck, Jamie Tisch, Angie Harmon



Pam and Howard Levine



Lynn Palmer, Dana Davis



Byron and Jennifer Allen



Bob Davis, Julie Araskog



Richard David, Suzanne Marx



Blair Underwood, Laura and David McKenzie



# WWD WEDNESDAY



Sportswear

## Hilfiger Helps Raise Funds to Fight MS

By Anne Riley-Katz

**LOS ANGELES** — Despite the economic malaise, fund-raising was in full swing at the Hyatt Regency Century Plaza here Friday night when Nancy Davis and Tommy Hilfiger co-chaired the 16th annual Race to Erase MS gala.

The annual charity event raises millions to support research to find a cure for multiple sclerosis, a chronic neurological disease. Davis, daughter of the late billionaire Marvin Davis, was diagnosed with MS almost 18 years ago.

This year's event was themed "Rock to Erase MS" and featured performances by the legendary band the Eagles and Michelle Branch.

Hilfiger said organizers revised fund-raising expectations because of the recession, but he and Davis were more than pleased with the generosity of donors and sponsors.

This year's tally was about \$2 million — closer than expected to last year's \$2 million-plus. The galas have raised a total of more than \$30 million.

"I was worried, but, in fact, we've been surprisingly successful," Hilfiger said. "Nancy is just relentless about her dedication to this, and that drove me to be a part of it."

A substantial portion of the money was raised at the evening's live auction, featuring the first Lamborghini Gallardo sports car in the U.S., which sold for \$270,000, as well as a weeklong stay at Hilfiger's vacation home and even a Maltese puppy that attracted lots of attention and commanded a winning bid of \$6,500.

Actress Angie Harmon checked out the canine, but opted not to bid. "My husband would kill me, and I think our other dogs might eat that poor little thing," said Harmon, who has a French Bulldog and a Greater Swiss Mountain Dog at home with husband Jason Sehorn, the former New York Giants football star. Harmon said her eyes were on footwear, rather than potential pets. "What I'm really coveting are [Amanda Bynes'] gold YSL shoes. Aren't they amazing?"

Harmon didn't leave empty-handed. She paid \$45,000 for one of the vacation stints at Hilfiger's beach home, as did Jamie Tisch, wife of New York Giants co-owner Steve Tisch.

Among the other guests were Los Angeles Mayor Antonio Villaraigosa, Dustin Hoffman, Penny Marshall, Sela Ward, Bill Maher, Anne Heche, Teri Garr, Avril Lavigne, Jewel and Kim Kardashian.

# The BEVERLY HILLS COURIER

The Best Read Newspaper in Beverly Hills

VOLUME XXXIV NUMBER 20 \$135 PER YEAR • \$1.25 PER COPY • www.bhcourier.com MAY 15, 2009

taking off for their Saturday night gig in Salt Lake City. The Eagles are a big "get," so hats off to Nancy and Tommy.

"We're doing our best to sing some of our songs that are upbeat," announced Don Henley, "since many aren't." Moanin' Michelle Branch preceded them, and the auction was brilliantly conducted by the young Vanessa Ambatielos Thanos, a recent bride. Auction prizes included a custom Lamborghini, which fetched \$275,000 from hip-hop/rock producer Vic Newman and mate Kim Gold; a stay at Tommy's luxury villa on the island of Mustique; and our tablemates, Kelly and Larry Thompson, bid \$16,000 for an Ultimate Party at home for 50 guests.

Mon Atelier couturier Ali Rahimi and his partner John Barle were seated with the beautiful Vanessa and husband Terry Thanos. Ali created Vanessa's bridal gown, and the dresses for her wedding party. He designs for Nancy Davis, her mom Barbara, and our best-dressed operaphile Patricia Ward Kelly, currently busy with her memoir about her late great husband Gene Kelly. We were seated in various areas of Siberia, and the only celebrity I glimpsed from afar was Penny Marshall, a fashion iconoclast, if ever there was one.

The event raised \$2 million. Fortunately, the speeches were edited, and dispensing with the fashion show this year was welcomed and appreciated by folks as

they waited in line for the gift bags. Nancy Davis reigns as the heroine for battling MS, having been diagnosed 16 years ago, and refusing to accept the doctor's doomsday evaluation that, more or less, indicated her life had ended. Soldiering on, she birthed twin beauties, Isabella and Mariella, and remains a busy and adoring wife to husband Kenny Rickel, a dedicated mom to her three handsome sons, Alexander, Brandon and Jason, always a loyal friend, and a powerhouse organizer.

Her Foundation supports the Center Without Walls network for the nation's top research centers devoted to this mystifying disease. A born beauty, Nancy represents the embodiment of Joseph Campbell's belief that, "A hero is someone who has given his or her life to something bigger than oneself."

Online at [www.bhcourier.com](http://www.bhcourier.com)



Avril Lavigne



Fashion iconoclast Penny Marshall



Anne Heche and James Tupper



Dee Olesppo is wed to Tommy Hilfiger



Hosts Tommy Hilfiger and Nancy Davis with her daughter Mariella at 16th annual Race to Erase MS gala at the Hyatt Regency Century Plaza Hotel.

Celebrity Photo/Gilbert Flores and Janet Gough

April showers bring May flowers, and May brings us the Nancy Davis' Race to Erase MS dinner, now in its 16th season, at the Hyatt Regency Century Plaza. These events have raised millions for research for the cure for multiple sclerosis. Hosts Nancy and Tommy Hilfiger theme their evening as Rock to Erase MS, and last Friday, the Eagles' Don Henley, Glenn Frey, Timothy Schmit, and Joe Walsh, who says he's from Mars, sandwiched in a performance before



Angie Harmon and Jason Segel



SATURDAY, MAY 9, 2009 | SERVING THE SAN FRANCISCO AREA

# Daily News

DailyNews.com



Evan Yee/Staff Photographer

Co-chairs Tommy Hilfiger and Nancy Davis arrive at the 16th annual Race to Erase MS fundraising event on Friday at the Hyatt Regency Plaza hotel in Los Angeles.

## CELEBRITIES JOIN THE RACE TO ERASE MS



Actress, director and producer Penny Marshall hits the scene Friday night at the Plaza.



Actor Shemar Moore and his mother, Marilyn, show their support.



Reality TV show star Kristin Cavallari adds spice and glamour to the MS event.



# SOUTHERN CALIFORNIA spaces

Canyons & Valley Edition

July/August 2009

## cause for applause

Philanthropist Nancy Davis and designer Tommy Hilfiger, right, co-chaired the 16th annual Race to Erase MS, which drew Hollywood luminaries like director Penny Marshall, below.



## Celebs rock her world

**Nancy Davis' annual gala raises \$2 million to fight MS**

The crowd at the Hyatt Regency Century Plaza rocked to the music of the Eagles during a star-studded gala that raised \$2 million to fight multiple sclerosis.

Nancy Davis and designer Tommy Hilfiger co-chaired the 16th annual Race to Erase MS, a ticketed cocktail reception attended by such luminaries as Oscar-winning actor Dustin Hoffman and singer-songwriters Avril Lavigne and Jewel. In addition to the Eagles, pop singer Michelle Branch performed at the May 8 gala, themed "Rock to Erase MS."

The other guests included actresses Angie Harmon, Anne Heche, Virginia Madsen, Elke Sommer and Sela Ward, actors Jon Lovitz and Jeremy Piven, director Penny Marshall and Los Angeles Mayor Antonio Villaraigosa.

Boosting the night's tally toward the \$2 million mark was the auction of a 2009 Lamborghini Gallardo sports car for \$270,000. Personalities Tom Arnold and Nancy O'Dell

also auctioned off luxury vacations, autographed sports memorabilia, a week-long cruise for eight on a yacht in the Caribbean and tickets to the "American Idol" finale.

Proceeds from the live and silent auctions benefit the Nancy Davis Foundation for Multiple Sclerosis and its Center Without Walls. The network of seven research centers works on finding treatments and a cure for MS.

Davis, the daughter of the late billionaire Marvin Davis, was just 33 when she was diagnosed 18 years ago with the chronic neurological disease. Since then, she's raised more than \$30 million for research and treatment programs.

"The Nancy Davis Foundation for Multiple Sclerosis wanted to build a winning team in The Race to Erase MS so we sought the best and the brightest throughout the world to create The Nancy Davis Center Without Walls," said Davis, now 52.



Guests at the MS fund-raiser included, clockwise from top, comedian Jon Lovitz, actress Kristin Cavallari, actor Shemar Moore and his mother, Marilyn, and Nancy Davis' son, Brandon.



The WAITING ROOM COMPANION Created for Your Doctor's Office

# WebMD

webmd.com

the Magazine | June 2009 \$4.95

## nan's NOTE from the editor in chief

**When my charming husband**, Stephen, told me the freckle on my upper back thigh was starting to "look scary," I thought two things: 1) He noticed the back of my thigh (swoon) and 2) Time to find a dermatologist I'm going to like spending some time with (sigh).

Of course, I first had to "WebMD" it. I clicked on **WebMD.com's** Cancer Health Center, selected the "melanoma" link, and found myself whipping through the slide shows. "That's what it looks like," Stephen pointed to one image. And off I went in search of a new doctor.



Several weeks later after a few visits to different dermatologists, I faced the music. "I was wondering why you didn't call me back on Friday when I called with your test results," my new derm, David Colbert, MD, said when I got back to him the next Monday. I didn't want to ruin my weekend, I explained and heard him sigh: another patient with avoidance tendencies. But I also heard him understand.

"The diagnosis is localized squamous cell carcinoma," Dr. Colbert said, gently (and when I checked WebMD again later, I was relieved to learn it is highly curable). He then explained what needed to be done in a way that was so compassionate and comprehensive that I thanked the existence of people smart and disciplined enough to attend medical school. And generous and articulate enough to be able to converse with a nonmedical person and make it understandable. And able to do all that without causing undue worry or panic.

This past week I flew to Los Angeles from New York (with a sore back thigh, to boot) to attend the annual Race to Erase MS fundraising event led by the determined and courageous MS patient Nancy Davis of the Nancy Davis Foundation for Multiple Sclerosis and its Center Without Walls program. Again, I was deeply touched to hear doctors speak to an audience of patients and their families in a language all could understand. Watching them present their scientific findings in an enlightening, understandable, hopeful, and always truthful way is, for me, equal to watching great professional athletes perform.

So remember: Never lose hope.

And keep asking questions. Finding what is right for any one person is an individual path and personal process.

Along with the power of love and laughter, I believe that being knowledgeable about health is perhaps the greatest skill we have for living well.

And being able to make the message understandable and personally motivating is worthy of a gold medal.

*Nan-Kirsten Forte*

Nan-Kirsten Forte, MS  
Editor in Chief, WebMD the Magazine









## **NANCY DAVIS FOUNDATION FOR MULTIPLE SCLEROSIS**

1801 Avenue of the Stars, Suite 1400, Los Angeles, CA 90067

310.440.4842

[www.erasems.org](http://www.erasems.org)